



FISHERMAN'S MARK
SOCIAL SERVICES

HELP WHEN HELP IS NEEDED

March 2025 Newsletter



From the Desk of Jennifer Williford, Executive Director

Dear Friends,

March 19th marks 45 years since the inception of Fisherman's Mark—45 years of resilience, impact, and unwavering community support! This is a milestone worth celebrating! What started as a small initiative, driven by the vision and dedication of our founding director, BJ Petty, and later guided by the leadership of Linda Meacham, has become a cornerstone of support for those in need. Their commitment laid the foundation for everything we do today, and I am honored to continue their legacy.



Fisherman's Mark has always been fueled by the generosity of individuals, local businesses, and community partners who believe in our mission. Your support has allowed us to adapt and respond to crises, from economic downturns to natural disasters, always ensuring that we never let down the community we serve.

As we look toward the future, we are excited about the work ahead! Fisherman's Mark

is committed to expanding and strengthening its facilities to better serve the community, with exciting projects on the horizon. Stay tuned for upcoming announcements as we embark on capital initiatives to ensure that Fisherman's Mark continues to be a place of hope, support, and opportunity for years to come.

Thank you for being a part of this incredible journey with us! Here's to the next 45 years of making a difference together.

With gratitude,



Jennifer Williford
Executive Director

Legacy of Support: 45 Years of Fisherman's Mark

Since its inception in 1980, Fisherman's Mark has been a pillar of resilience, care, and compassionate support for our community. Since its founding, Fisherman's Mark has played a vital role in shaping the lives of thousands of individuals and families. What began as a small grassroots initiative has grown into a thriving nonprofit that continues to meet the evolving needs of our community. Take a look at how we've evolved and expanded over the last 45 years:

A Look Back at the last 45 Years



1980

Under the leadership of Barbara (BJ) Petty, Fisherman's Mark was incorporated as a non-profit social service organization to fill a void in the social service network, and meeting a variety of needs within the community.

1984

Lambertville Academy Early Childhood Learning Center was incorporated under the Fisherman's Mark umbrella, providing a safe learning environment for children.





2012

Los Puentes (the Bridges) Program was established to connect and empower our Latino neighbors as one of our most essential outreach

programs. Los Puentes offers advocacy, resources, and cultural support to foster inclusion and address the unique needs of the Latino community

2013

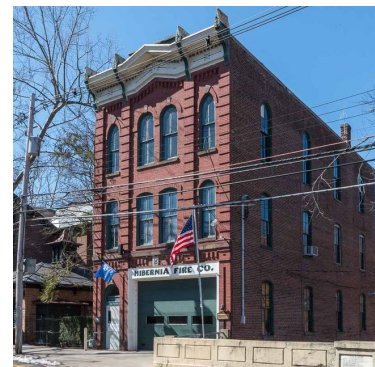
Linda Meacham assumed the role of Executive Director upon the retirement of BJ Petty. Under Linda's leadership, Fisherman's Mark achieved secure financial footing that allowed us to continue to grow and expand, meeting further needs within the community.



2016

To secure our financial future, Fisherman's Mark sold the building at 89 Main Street, Lambertville and moved into the vacant Hibernia Fire Station.

Fisherman's Mark Social Services and Food Pantry moved to the Hibernia Fire Station, built in 1875 along Swan Creek. The building provided ample space for our social services and food pantry operations until severe flooding in 2021 left the building unfit for operations.



2020

While other food pantries closed, Fisherman's Mark adapted our model to stay open throughout the pandemic. Our new system ensured the safety of both volunteers and participants while continuing to provide essential items to keep our neighbors fed.

Jennifer Williford assumed the role of Executive Director upon Linda Meacham's retirement. Jennifer is only the third Executive Director in Fisherman's Mark's 45-year history. Before coming to Fisherman's Mark, Jennifer spent 24 years with the Somerset Hills, YMCA in Basking Ridge, NJ where her work encompassed member engagement; board, volunteer, and donor development; strategic planning; and program development.



2021

Following the flooding caused by Hurricane Ida, Fisherman's Mark was displaced and relocated to temporary space in the vacant market at 262 N Main Street, which proved to be the most suitable location for our Free MARKET operations.

Fisherman's Mark purchased a van to provide food support for our homebound neighbors while also enabling us to efficiently pick up grocery items from our various Free MARKET partners. In use five days a week, this van has become an essential piece of equipment, ensuring we can meet the growing needs of our community.



2022

Fisherman's Mark purchased 60 Wilson Street in Lambertville to house our administrative and social services offices. This location has proven ideal, offering ample office and conference space while ensuring privacy for appointments with our social worker.

Today

Fisherman's Mark continues to adapt and respond to challenges, ensuring that no one in our community is left behind. With ample

parking and a strategic location, the facility at 262 N Main Street ensures accessibility for program participants.



Tomorrow and Beyond

Through the challenges of the pandemic, natural disasters, and economic uncertainty, Fisherman’s Mark has remained steadfast in our mission. Whether responding to crises or adapting our programs to meet new demands, we have proven time and again to be an essential resource for those in need.

We’re getting very close to sharing some exciting plans that will strengthen our impact and ensure we can serve the community even more effectively for years to come—stay tuned! With a focus on long-term stability and expanded services, we are preparing for the next chapter of Fisherman’s Mark, building on our legacy of the first 45 years and laying the foundation for the future.

This 45th-anniversary milestone is also a celebration of you—our donors, supporters, volunteers, and staff. Your belief in our mission has allowed us to grow, adapt, and remain a lifeline for so many. Thank you for being part of the Fisherman’s Mark family!


Here’s to the next 45 years of service and success!

A Playground for All!

Lambertville Academy Playground Project: Final Phase

Exciting news! The Lambertville Academy Playground Project is entering its final phase, bringing a safe, inclusive play space not just for students but for the entire Lambertville community.

Thanks to the generosity of the Where Angels Play Foundation, the playground will feature new equipment, enhanced safety surfacing, and expanded accessibility. For the first time, it will be open to the public after school hours, allowing families to enjoy it weeknights after 6 PM and all weekend long.

 The Lambertville Academy



Playground Project

This project has been years in the making, made possible by local organizations, businesses, and generous donors who recognize the importance of safe play spaces for children. The final phase includes:

- A new climbing structure for ages 2-5
- Poured rubber surfacing for safety & accessibility
- Public access after school hours

As we celebrate this milestone, we invite you to pay it forward by supporting Where Angels Play Foundation, an organization that has built more than 50 playgrounds in communities affected by loss and hardship, creating lasting spaces of joy, healing, and community.

LEARN MORE: LAMBERTVILLE ACADEMY PLAYGROUND PROJECT

VISIT WHERE ANGELS PLAY FOUNDATION

Lambertville Academy Playground: Final Phase Renderings:



Team Building with Impact: Staff Takes on the Supermarket Sweep

At Fisherman's Mark, we believe that understanding the real-life challenges of our program participants helps us better serve the community. That's why our team recently took part in a Supermarket Sweep at Giant in New Hope—a hands-on, team-building experience designed to highlight the struggles of shopping on a limited budget while ensuring our Free MARKET food pantry stays stocked with essentials.



Meet Our Dietetic Intern: Rachel Schilp!

We're thrilled to welcome Rachel to Fisherman's Mark! A West Amwell resident, she is currently a dietetic intern at Cedar Crest College, working toward her master's degree in nutrition and her Registered Dietitian-Nutritionist (RDN) certification.

Her passion for community nutrition led her to Fisherman's Mark, where she's already making an impact! Over the next five weeks, she'll be:

- Assisting at the Free MARKet – stocking shelves, serving members, and supporting donations
- Conducting a nutritional analysis of our food offerings
- Sharing nutrition education through flyers, recipes, and workshops



Her goal? To help ensure that everyone who relies on Fisherman's Mark has access to nourishing, balanced meals—and to build connections that last beyond her internship.

Join us in welcoming Rachel to the team!

Volunteer Income Tax Assistance

Fisherman's Mark is proud to partner with United Way of Hunterdon County to serve as a satellite location for the Volunteer Income Tax Assistance (VITA) program. This free tax preparation service is available to low-to-moderate income residents and ensures that eligible individuals receive the refunds and credits they deserve.



Trained volunteers provide secure, accurate, and electronic tax filing at our 60 Wilson Street location in Lambertville every Wednesday through April 15. Appointments are also available at other sites throughout Hunterdon County.

This partnership is a great example of how community collaboration strengthens the support available to our neighbors.

Keep in Touch!



Donate

Fisherman's Mark | 60 Wilson Street | Lambertville, NJ 08530 US

[Unsubscribe](#) | [Update Profile](#) | [Constant Contact Data Notice](#)



Try email marketing for free today!